



WORSHIP SERVICE

SUNDAYS

9:30AM

CHRIST CHURCH

915 E Oklahoma Ave
Milwaukee, WI 53207
414-481-3530
office@uccmke.org
www.uccmke.org

IN THIS ISSUE

CALENDAR

PASTOR'S LETTER

SOCIAL CONCERNS PROJECTS

PRAYER REQUESTS UPDATES

MOVIE & LENT

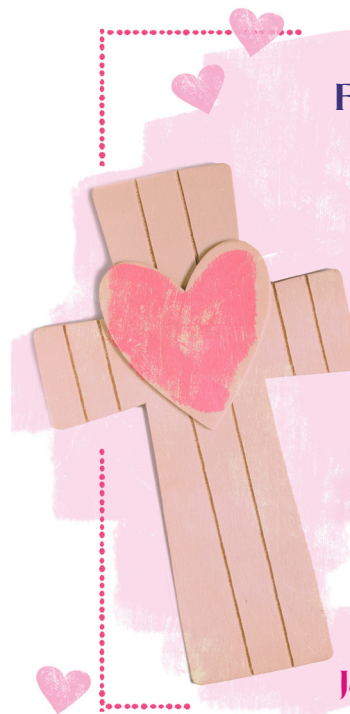
MARDI GRAS

HIDING IN PLAIN SIGHT

STEWARDSHIP SNIPPET

THANK YOUS

BIRTHDAYS



For God

so LoVed the world

that He gAve

His onLy

begottEn

SoN

That whoever

believes In Him

should Not perish

but have Everlasting life.

John 3:16



Bible Quiz



The New Testament uses several Greek words to describe love. Which of the following best represents the **selfless, sacrificial love** that God shows to humanity?



- A) Eros
- B) Phileo
- C) Agape
- D) Storge

HELLO february 2026

SUN	MON	TUES	WED	THURS	FRI	SAT
1 Rev Jeffrey Montoya Liturgist-Randene Choir BVCC Donations	2	3	4 Choir 7pm	5	6	7
PASTOR BOB	GONE					
8 Liturgist-Doris M Choir 	9 Finance Meeting Noon	10 Quilting 9:30am	11 Movie: <i>The Way</i> in the Fellowship Hall at noon Bring a bag lunch 	12 Handbells 9:30am	13	14 YOU ARE LOVED!
15 Liturgist-Jill U ONA 8:45am Mardi Gras 	16	17	18 Ash Wednesday Noon at Christ Church 5:45pm potluck & 7pm service at Prince of Peace	19 Handbells 9:30am 	20	21
DARLENE	GONE					
22 Liturgist-Chuck T Handbells	23	24 Quilting 9:30am Council Meeting 6pm 	25 Noon Lenten Service Choir 7pm	26 Divine Intervention 6pm 	27	28

Pastor's Letter

Lent 2026

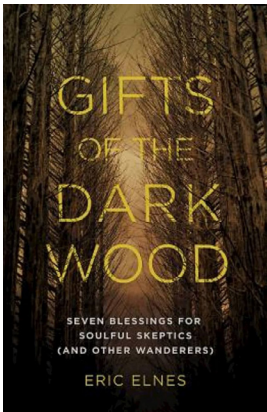
You don't choose a life, you live a life. ~The Way (2010)

I will make a way in the wilderness and rivers in the desert. ~Isaiah 43:19



Lent is a time of reflection, and there's nothing like a pilgrimage to conjure that up. Making intentional journeys has been a ritual of humankind across time and traditions. Inspired by passages in the Judeo-Christian scriptures that talk about the journeys, roads, and pathways of life, we will make our way together through this season.

This Lent we will again be participating with SECA for Ash Wednesday, Maundy Thursday, and Good Friday. SECA will gather for **Ash Wednesday** worship, **Feb 18**, at Prince of Peace Lutheran Church on Howell Ave at **7pm**. There will be an optional Community Potluck beforehand at 5:45.



Meanwhile . . .

On Sunday mornings we will be engaging a worship series based on the book, *Gifts of the Dark Wood: Seven Blessings for Soulful Skeptics (and Other Wanderers)*, by UCC Pastor Eric Elnes. The book, and our worship series is about “seeing life through new eyes,” recognizing that experiences of failure, emptiness, and uncertainty are as critical for finding our way through life as they are unavoidable.” We will see how experiences of life through the “dark wood” are actually clues to our “calling” or “life path.” We will explore how the struggles of life can be the seedbed of spiritual awakening to the fullness of life.

On Wednesdays at noon, beginning **Ash Wednesday, Feb 18 through March 25**, we will gather in the chapel to explore images from the popular and poignant movie, *The Way*, starring Martin Sheen, about a father's pilgrimage in honor of his late son on the famed Camino de Santiago in France and Spain. It will serve as our modern-day inspiration to live the life we've been given to the fullest. Bring your bag lunch at 11:30, worship starts at noon.

But wait there's more . . .

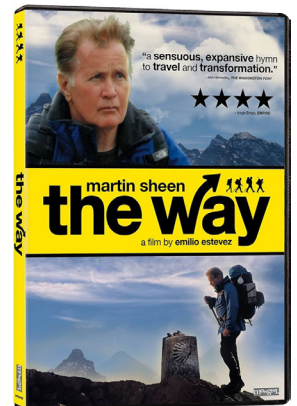
There will be a **Daily Devotional** written by me which will replace the devotional you may already be receiving for the season of Lent. If you're not signed up, please reach out to Darlene and get your email added to the list. After Easter Sunday, it will return to what you have been receiving. It will also be posted to our Facebook page.

For those who haven't seen the movie, *The Way*, I will host a screening at the church on **Wednesday, Feb 11 at noon**. Bring a bag lunch or a bag of popcorn and come watch the movie with me.

You don't need to read the book or watch the movie to be enriched on this journey. Simply be present in worship on Sundays and/or Wednesdays. Yet, if you choose to do so, I believe it will be a richer experience for you.

I look forward to journey with you this Lent.

Pastor Bob



If you should need pastoral support, please contact
Pastor Bob Gross at **440-506-3258** or **pastor@uccmke.org**
Pastor Office Hour:
Tues and Wed, 10am-Noon and 1-3pm or by appointment

LITURGISTS

Feb 1	Randene W
Feb 8	Doris M
Feb 15	Jill U
Feb 22	Chuck T

QUILTING

Tuesdays, **Feb 10 and 24**, 9:30AM–Noon

CHOIR & HANDBELLS

CHOIR

Wednesdays, **Feb 4** at 7pm
Singing - Sundays, **Feb 1 and 8**

HANDBELLS

Thursdays, **Feb 12 and 19** at 9:30am
Playing - Sunday, **Feb 22**

SUNDAY COUNTERS

First Sunday	Debbie H / Mark P
Second Sunday	Janet K / Joyce Z
Third Sunday	Danette V / Renolle V
Fourth Sunday	Sara R / Jill U
Fifth Sunday	Debbie H / Doris M

GREETERS

Feb 1	Andy O / Madeline N
Feb 8	Peggy C / Kathleen S
Feb 15	Tom & Carol D
Feb 22	Nancy K / Janet D

COFFEE HOUR

Feb 1	Paul & Doris M
Feb 8	Tom & Carol D
Feb 15	Cristal R / Membership
Feb 22	

FINANCE MEETING

Monday, **Feb 9** at noon

ONA MEETING

Sunday, **Feb 15** at 8:45 AM

COUNCIL MEETING

Tuesday, **Feb 24** at 6pm



Ash
WEDNESDAY

Ash Wednesday
February 18

Noon at Christ Church

&

7pm at

Prince of Peace Lutheran
with a Potluck starting
at 5:45pm



WEDNESDAYS DURING
Lent

Lenten Worship Services

will be held on

February 25

March 4

March 11

March 18

& March 25

If you wish, bring a bag lunch and
we'll eat together at 11:30am

FEBRUARY MOVIE & BAG LUNCH



**Wednesday, Feb 11
at noon**

in the Christ Church
Fellowship Hall.

Bring a bag lunch. Movie:
The Way (2010) is about
an American doctor,

Tom Avery (Martin Sheen), who travels to France to retrieve the body of his estranged son, Daniel (Emilio Estevez), who died while walking the Camino de Santiago pilgrimage in Spain; grieving and seeking understanding, Tom decides to complete the journey himself, carrying his son's ashes and meeting other pilgrims, leading to profound personal transformation and connection.

This movie will serve as a basis for noon Lenten services beginning the following week on Ash Wednesday. Everyone is welcome to join us. *Membership Committee*

PRAYER REQUESTS



All prayer requests are welcomed. As always people can call the office and provide information for a specific request.

Pastor Bob is always

available for prayer requests in person, by email, or by phone. In addition, a prayer request card will now be available in the church pews (by the church envelopes). Place your prayer request cards in the offering plate. These prayers will be shared in the bulletin and newsletter, for the month they are received. At the end of the month, they will not automatically be reposted, so we ask that you please complete a NEW prayer request card. With any updates, your input is helpful to make sure we are addressing everyone's concerns and suggestions.

Membership Committee and Music & Worship Committee



MARDI GRAS CELEBRATION



**Sunday, Feb 15 during
Coffee Hour**

Come one! Come all!

Celebrate Mardi Gras before
Ash Wednesday! There is a
special prize for the person
who finds the baby in the

"King Cake!" Wear any Mardi Gras decor you may have. Take a selfie in the photo area. Come join the fun!

Sponsored by the Membership Committee

DIVINE INTERVENTION

Please sign up to help with
food items and /or serving
our February meal on
Thursday, Feb 26. There
are typically 25 guests and
volunteers for each meal.

The theme for this meal is:

Chicken casseroles with rolls,
salad, dessert, milk. The donation sheet is on the

Lenox Street Bulletin Board. Food items must be
dropped off at Tippecanoe Presbyterian Church, 125
W. Saveland Avenue by 6pm. See *Jim or Randene* for
more information.



CHRIST CHURCH PAPER DRIVE

The Divine Intervention warming
room is in need of paper products,
specifically paper towels and
toilet paper. A collection box
for donations is located outside
the office near the Lenox Street
entrance. We will be collecting
these items throughout January
and February.



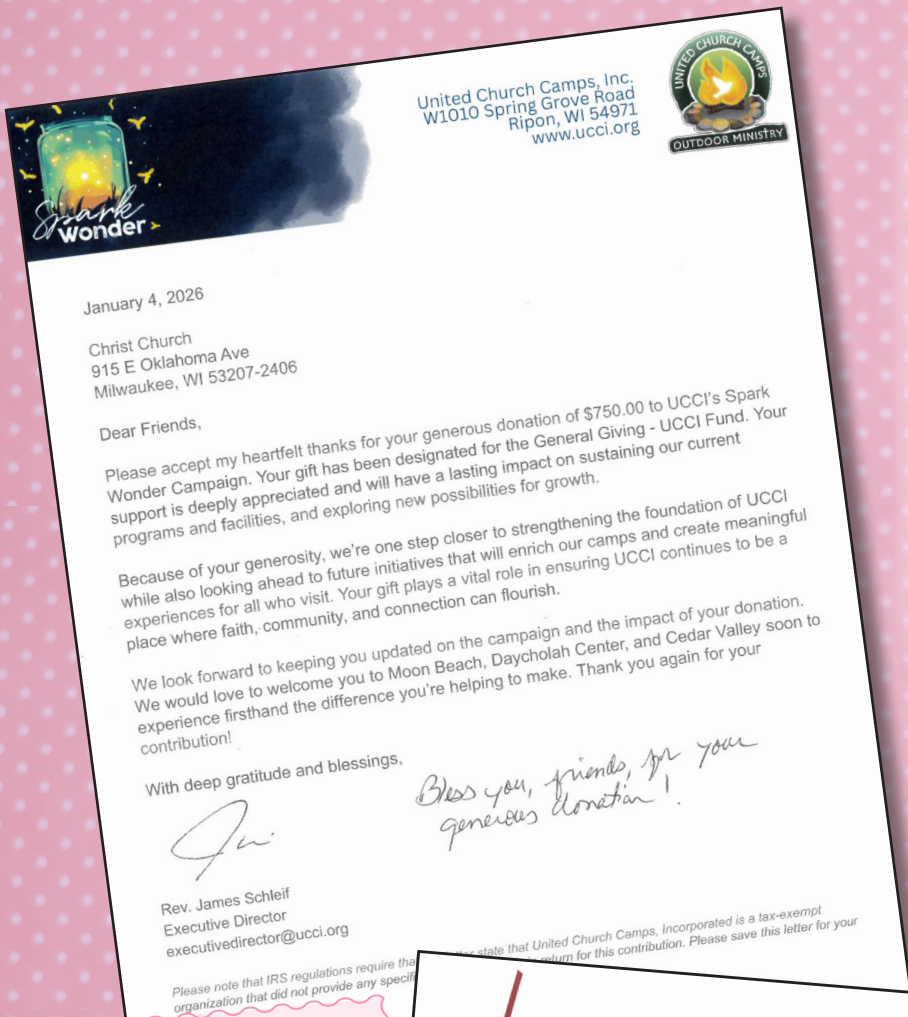
BVCC FOOD DONATIONS

We are continuing our monthly
donation of food for the BVCC
food pantry. Please bring your
items to church the **first Sunday
of each month.** Donations can be
placed in the grocery cart located
in the chapel. Thank you for
helping provide for those families
in our community in need! Any
donations are greatly appreciated,

or a financial contribution can be made directly to the
BVCC. *BVCC thanks you for supporting your neighbors in need!*

Needed items: canned vegetables and fruit, peanut butter
and jelly/jam, rice and beans, breakfast cereals, oatmeal,
shelf-stable milk, canned tuna or chicken, cooking oil, personal
hygiene products (toothpaste, soap, shampoo)





We
love
because
He first
loved us.

1 John 4:19

Many Thanks from Divine Intervention!

The beef stew and meatball stew were devoured by the 14 guests, plus volunteers, and staff on January 15th. The salad with a variety of toppings, fresh rolls, and yummy desserts were appreciated by everyone. We have discovered that providing rice as a side is appreciated by the guests. Thanks to everyone who contributed to the meal and/or helped serve the food. "People who give you their food, give you their heart" ~Cesar Chavez

MANY THANKS!

A HUGE thanks to everyone who contributed to our hat and mitten collection. We had so many items we are able to donate to Trowbridge, Bruce Guadalupe, and Humboldt Park Schools. We collected 400 hats, 60 scarves and 12 hat and mitten sets. A special thanks to Ken Klockow's group from Wilson Commons for their generous donation.

Thanks, Your Social Concerns Committee

Milwaukee Rescue Mission

December 19, 2025

Christ Church UCC
Friends of MRM
915 E Oklahoma Ave
Milwaukee, WI 53207-2406

Dear Friends,

Every day, hundreds of men, women, and children walk through our doors in search of a hot meal, a safe place to rest, and a chance to rebuild their lives. That's why your generous gift of eight Amazon \$25 gift cards, new toys, pajamas, hats and mittens that we received on 12/10/2025 means so much! Your support helps ensure that our struggling neighbors find the nourishment, shelter, and hope they need for a fresh start.

Many of those who come through our doors are carrying deep wounds—some from trauma, others from the weight of addiction or mental illness. Whatever their story, your kindness helps provide the tools, guidance, and compassion they need to experience life transformation.

Thank you for caring so deeply. May God bless you richly this holiday season!

Gratefully,

Patrick H. Vanderburgh, D.Min.
President

The steadfast love of
the LORD never ceases:
his mercies
never come to an end.

Lamentations 3:22, ESV



FEBRUARY birthdays

HAPPY BIRTHDAY BLESSINGS TO YOU!

Joyce Zieman - 1

Randene Wick - 3

Carol Dohoney - 5

Joan Amich - 7

Ray Blankenberg - 9

Chuck Terlinden - 12

Michael Baran - 13

Susan Klockow - 15

Blair Goedel - 19

John Popp - 19

Cyndi Kroening - 26

Chelsea Clark - 27

Karen Nack - 28

Anyone who would like to send notes or cards to Nancy Schlaack can send them to the following address:

Nancy Schlaack
c/o Rebecca Rehorst
7314 Wilburton Lane
Northport, AL 35473



Hope House of Milwaukee, Inc.
209 West Orchard Street
Milwaukee, WI 53204

Ending homelessness and creating healthy communities

December 31, 2025

Christ Church, UCC
915 E. Oklahoma Ave.
Milwaukee, WI 53207

Dear Christ Church, UCC,

Thank you for your recent donation of \$500.00 to Hope House of Milwaukee. It is contributions like yours that provide hope and directly support families and individuals who have lost their homes.

Through your generous support, we are responding to those in need, expanding programs to prevent homelessness from ever happening, and ensuring families throughout Milwaukee have healthy, stable homes. If you would like to learn more about how we tackle homelessness with your contributions please feel welcome to schedule a tour of Hope House. I can be reached at patrick@hopehousemke.org or (414) 389-3845. With your support, we are moving closer to ending homelessness in Milwaukee. A goal that is possible together!

Thank you for being a part of our mission to end homelessness and create healthy communities. We truly appreciate your support.

Sincerely,


Patrick Schrank
Development Director
patrick@hopehousemke.org
(414) 389-3845

Thank you so much for your gift!

Hope House is a federally tax-exempt organization and all contributions are tax-deductible to the fullest extent of the law.
No goods or services were received in exchange for this donation.

Phone (414) 645-2122

www.hopehousemke.org

Fax (414) 645-2249



*His love fills my cup
to overflowing.*

HIDING IN PLAIN SIGHT

A few weeks ago, I was talking with someone near the Oklahoma Avenue entrance when my eyes wandered over to the plaque on the wall. After we finished our conversation, I took a closer look at this list of the nine members of Christ Church who were killed during World War II. Being a history minded guy, I decided to see what I might learn about these men who gave their lives to defend democracy and to fight fascism. I discovered that our Milwaukee County War Memorial Center has an extensive database covering all county casualties in World War II. Over the next year I'll be writing up a little something each month on each of these men but for now just take a look at this picture and then maybe go over and see the plaque in person next time you're in church. You might want to offer a silent prayer of gratitude for their sacrifice.

Also, if any of you are familiar with these men or their families, please share with me what you remember. Lest we forget, Andy Oren



COUNCIL CORNER

Thank you for electing me to the Christ Church Council, and I am honored to serve as the Council secretary. The last time I served on the Council was the year 2000. The church, the city, and the world were all very different, but some things never change. There are profoundly good people who fight for right and justice, and there are many people in desperate need. Christ Church is on the frontlines of fighting for right and justice and of helping the people who need it most.

The Christ Church Council has been busy. I should have known—as soon as the election was over, two heads snapped around and announced in unison, “There’s a meeting on Tuesday!” Council President Jim Wick has worked tirelessly to get an interim minister in place and to get organized to start the search process for a settled minister. Sue Pfeifer and Randene Wick manage the Pastor/Parish/Personnel and Membership Committee and collaborate well church wide. Julie Oren is meticulous in her records as treasurer and Finance Committee chair, and she is learning a lot as the Property chair. Memorial Committee rounds out Julie’s duties, and she is always smiling! Pam is keeping the Worship and Music Committee rolling, using Zoom or in person. Pam spearheaded the successful special collection in December to balance the budget. Doris Mayasheba is a tireless proponent of Christian Education for children and adults. Joe Rogge keeps Sunday mornings flowing smoothly as Ushers chair. Jan Naefken is chair of the Social Concerns Committee, which includes Share & Care and nurtures the souls of our members and shut-ins. Sara Rogers is the Open and Affirming chair, concepts which Christ Church continues to aspire to.

Remember the children’s song, “I am the church, you are the church, we are the church together.” That is Christ Church, and we are all blessed to be serving Christ together.

Janet Key

STEWARDSHIP SNIPPET

Monthly Activity	December	YTD
Contributions	\$23,473	\$161,315
Other Income	\$7	\$42,904
Total Income	\$23,480	\$204,219
Expenses	\$ 12,593	\$216,578
Budgeted Amount	\$14,867	\$178,400

Church Directory

UPDATE



UPDATING THE CHRIST CHURCH DIRECTORY

The Membership committee is in the process of updating the correct mailing addresses, phone numbers, and email addresses for all the members of our congregation. Please contact the office with any updates or on a Sunday morning contact Jan Naefken or Randene Wick.





COLOSSIANS 3:14

And over all these virtues put on love, which binds them all together in perfect unity.

The Book of Colossians reiterates the belief that love is the supreme attribute for Christians to strive toward. That love would wash away any differences that believers, and non-believers, would face and be the uniting factor for all people. This scripture for Valentine's Day is definitely one we could apply year round.

1 PETER 4:8

Above all, love each other deeply, because love covers over a multitude of sins.

Love is the trump card that every Christian should play. If Christians love God and love others, then it would cover all other sins and make forgiveness possible.

ROMANS 12:10

Be devoted to one another in love. Honor one another above yourselves.

This scripture on love is a simple and straightforward one: Christians are called to put others above themselves. God wants us to serve Him and others, and we can do that with love and actions.

MATTHEW 5:44

But I tell you, love your enemies and pray for those who persecute you.

When God says "love others," He means everyone. Even those who hurt us or betray us or who aren't Christian. Our love for others, even those we do not like, will be the mark of our Christianity. It is how others will know we love and worship God.

ROMANS 8:35

Who shall separate us from the love of Christ? Shall trouble or hardship or persecution or famine or nakedness or danger or sword?

Committing your life to Jesus doesn't mean that your life will be without trouble, and this scripture about love reminds us that nothing can separate us from the love of God. He will be there through the good and bad times.

WITH LOVE FROM ABOVE

The Bible is full of special words from our loving God.

Directions: Using the messages on the candy hearts, complete the Bible verses (all NIV) below.



God is our _____ and _____,
an ever-present help in trouble. Psalm 46:1

"Surely I am with you _____." Matthew 28:20

And the _____ of God ... will guard
your hearts and your minds in
_____. Philippians 4:7

Whoever lives in _____ lives in God,
and God in them. 1 John 4:16

_____ love drives out fear. 1 John 4:18

Answer: refuge, strength, always, peace, love, perfect

Chocolate is sweet.
but
God's
love
is even
sweeter.



CHRIST CHURCH

United Church of Christ

915 East Oklahoma Avenue

Milwaukee, WI 53207

Place
Stamp
Here

ADDRESS SERVICE
REQUESTED

THE CHRONICLES February 2025



GET CONNECTED

If you want to know more about the happenings at Christ Church, visit our website at www.uccmke.org

Like us on facebook at www.facebook.com/christchurchbayview

Subscribe to our YouTube channel and watch the weekly worship services: www.youtube.com/@ChristChurchUCCBayViewWI/streams

Donate Now

It's as easy as clicking the donate button here!

Or, go to the church website and click on the donate button

at www.uccmke.org/donate

DONATE NOW

Thank You!